

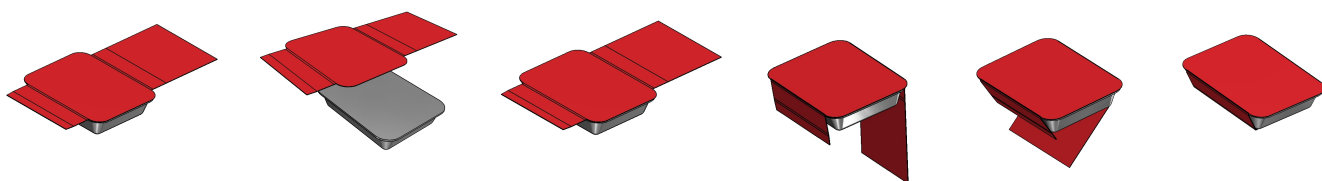
High product competence - Maximum availability -
Easy format change - Solid construction



Sleeve-Machine Type BM

The sleeve machines, type BM, are outstanding in efficiency and flexibility due to their ability up to 150 sleeves/minute. The sleeve blanks are sucked off and taken off the magazine using a pivoting or rotating feeder, then they are placed in or against running direction onto the product that has been fed into the machine by a conveying system. Products and blanks are positioned in such a way that the blanks can be formed around the product in U-shape.

Due to form-fit upper chains and lateral belts the blanks are firmly fixed and the short gluing flaps can be folded and glued. The fixing of the blanks in the machine minimizes to a high degree the shifting of the flaps and thus an optimal appearance of the product is assured.



Sleeve-Machine Type BM

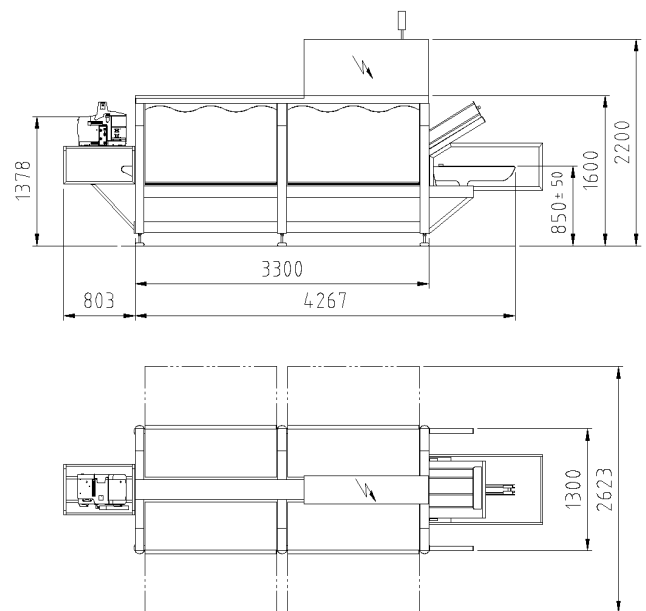
The sleeving of products offers great advantages; an appealing shelf display of the products in the store and an increased protection of the goods are guaranteed. An additional safety device is especially recommended for delicate products such as cakes, baby food or milk products. Furthermore, single items can be formed into a unit or the product can be displayed individually and effectively.



Since each product is individual, the sleeves, the gluing of sleeves and their in-feed have to be adapted according to the product's condition. Consequently, the machines are special constructions and highly customized. ECONO-PAK develops and designs individual sleeve-machine concepts according to customers' requirements. The sleeve can either be wrapped around the bowls or trays or they can be laterally pushed into the pre-glued sleeve.

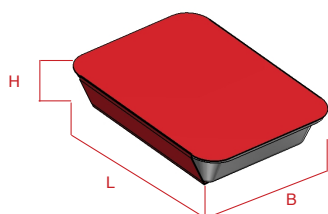
The in-feed of the sleeve machine is directly related to the product size. The glue can be applied on the bottom inner side or sideways on the outside (e.g. with standing edge). Besides the conventional in-feed with belt or round belt, the in-feed can also be carried out by worm in-feed that can be optionally integrated in all BM types. This in-feed is precise and form-fit. The products can also be filled manually.

Layout Dimensions



Technical Data (Standard)

Format range (L x B x H)



Adjustable formats min. 100 x 60 x 25 mm
max. 320 x 320 x 80 mm

Special formats on request

Machine capacity per minute 60 - 150 sleeves

Closing method hot glue nozzle application

Electrical power / air consumption

BM 60, BM 80 4,9 KVA / 90 l/min
BM 100, BM 120, BM 150 7,0 KVA / 90 l/min

Weight

ca. 1000 kg (BM 60), 1200 kg (BM 80), 1500 kg (BM100), 1800 kg (BM 120), 2200 kg (BM 150).

Formatchange

approx. 10 min

(Technical modifications reserved)