

Small Layout - Solid construction - High availability -
Low maintenance - Easy format change



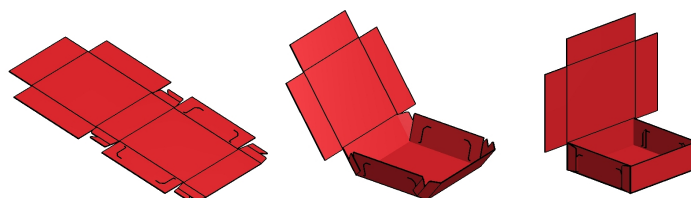
Carton Erector Type FA

The carton erector type FA is ECONO-PAK's most lucrative packaging machine in terms of dimensions, reliability and efficiency. This machine has been manufactured since the company's foundation and continually modified according to technical innovation. The long-lasting technical experience is evident in the highly precise and reliable execution of the machine and construction of components.

A carton feeder with vacuum suckers takes the flat carton blanks individually off the magazine and places them centrally onto the lower tool part. A forming head pushes the blanks through the tool chute and in doing so the cartons are formed. The erected cartons fall onto a conveyor and are transported out of the erector area.

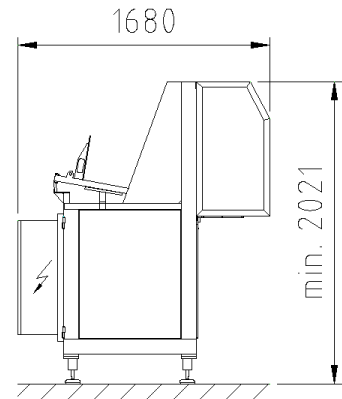
Due to the small size the machine can be used as a stand-alone unit or easily integrated into packaging lines. The highly profitable purchase costs, especially when opting for a tab-lock version, as well as the format range and the requested speed constitute vital criteria in the purchase decision-making process.

More than 400 installations of the machine type FA on the national and international market underline the fact that the customers are highly satisfied with the simple operation and the manifold application options of the carton erector, regardless of industry and product type.

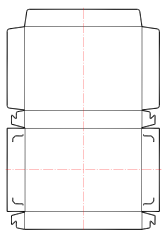


Carton Erector Type FA

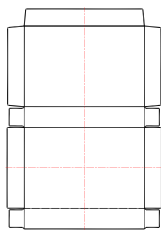
Layout Dimensions



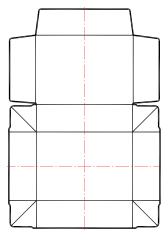
Available Forming Tools



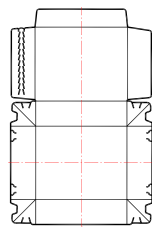
Tab-Lock



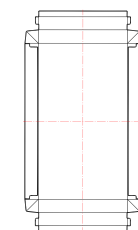
Glue



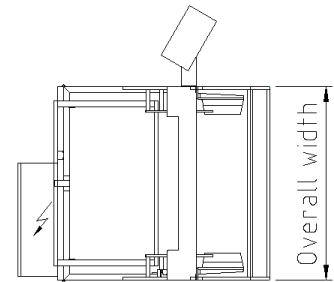
Hot-Air



Edge-Wep



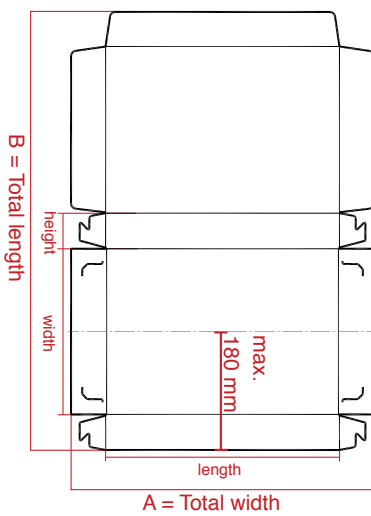
Turn-Over-End



Numerous adaptability options of the tools facilitate the handling of almost all carton constructions. An easy, fast and economical erecting process of cartons in tab-lock, glue, hot-air, turn-over-end, edge-wep and special design is facilitated by exchanging the tools according to the respective carton blank. The standard equipment with quick-change magazine and fixed-format parts allows for an easy and fast tool change and is one of the main characteristics of this machine.

Technical Data (Standard)

Format range



Carton blank

A-dimension:	150 - 750 mm
B-dimension:	275 - 650 mm

Dimensions carton:

Length:	100 - 700 mm
Width:	50 - 320 mm
Height:	20 - 160 mm

Multi-head tools and special formats on request

Cartons per minute 10-180 depending on design and format of carton

Magazine capacity approx. 1000 blanks per forming head depending on carton thickness

Overall width (max. forming tools)
1300 mm (2)
1600 mm (3) / 1800 mm (3)
2000 mm (4)

Power supply 400V/ 3 Phase-N-PE / 50 Hz, Control Voltage 24V/DC

Electrical power/ air consumption at 45 strokes vacuum air	Tab-Lock	5,6 KVA/ 178 l/min - 5,6 KVA / 712 l/min
	Glue	9,8 KVA/ 204 l/min - 21,8 KVA / 820 l/min
	Hot-Air	12,1 KVA/ 178 l/min - 31,9 KVA / 712 l/min
	Edge-Wep	5,6 KVA/ 204 l/min - 5,6 KVA / 820 l/min
	Turn-Over-End	5,6 KVA/ 204 l/min - 5,6 KVA / 820 l/min

Weight 400 kg - 750 kg depending on overall width (excluding forming tools)

Change over approx. 5-10 min. using forming parts

(Technical modifications reserved)