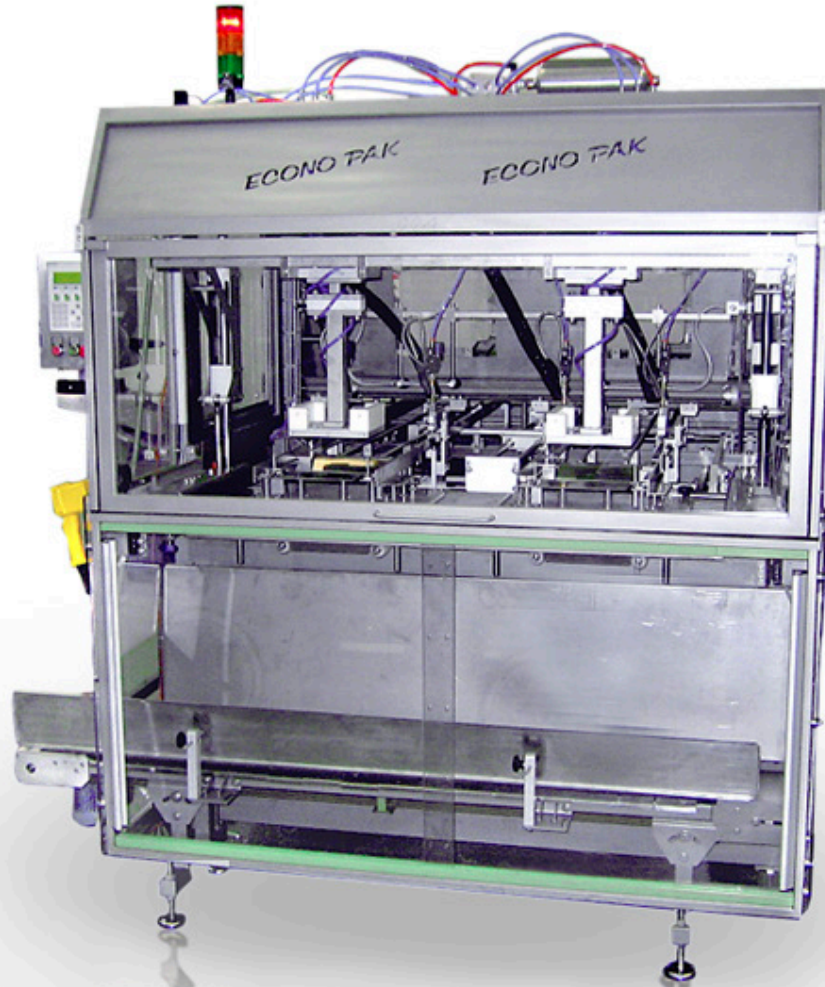


Solid construction - High availability -  
Low maintenance - Large range of operation



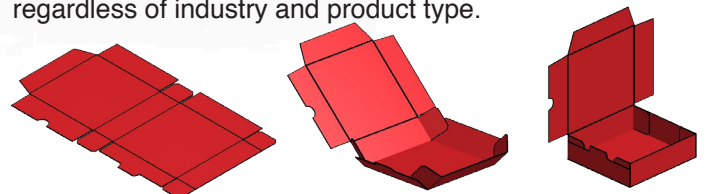
## Carton Erector Type FAI

The carton erector type FAI is an indirect carton erector that is characterized by its almost universal application and ample format range.

A carton feeder with vacuum suckers takes the flat carton blanks individually off the magazine and places them on guide rails. The blanks are pushed in guided manner to the lower tool part. A forming head pushes the blanks through the tool chute and in doing so the cartons are formed. The erected cartons fall onto a conveyor and are transported out of the erector area. In comparison to the FA type technical modifications facilitate the handling of nearly all carton constructions by the FAI type. In addition to the forming tools that are usually installed in the FA machine, the FAI can also be equipped with a gluing tool and gluing device.

The glue application by nozzles, comprehensive format range and high speed constitute vital criteria in the purchase decision-making process. The machine can be used as a stand-alone unit or can be easily integrated into packaging lines.

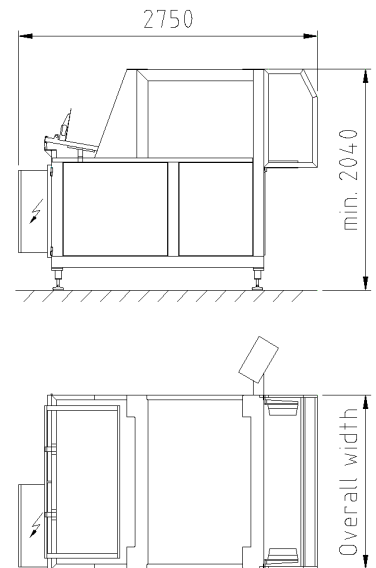
Numerous installations of the machine type FAI on the national and international market underline the fact that the customers are highly satisfied with the simple operation and the manifold application options of the carton erector, regardless of industry and product type.



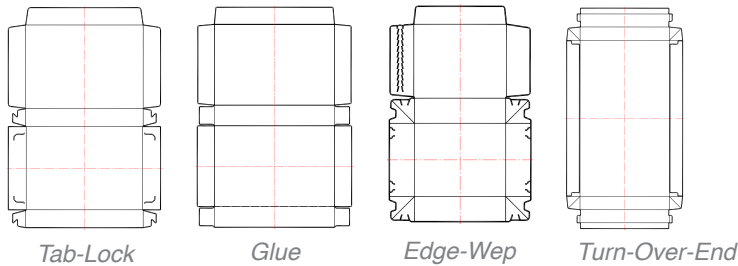
# Carton Erector Type FAI



## Layout Dimensions



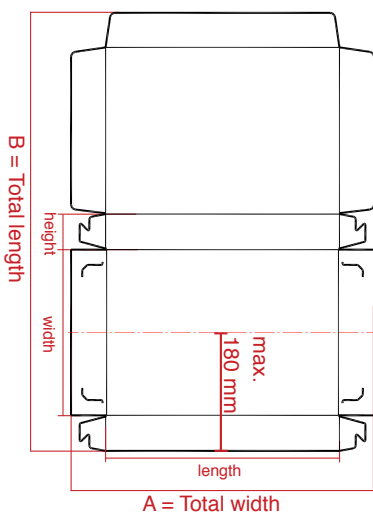
## Available Tools



The machine can be adapted to other erecting techniques by exchanging the forming tool. Tab-lock, gluing, turn-over-end, edge-wep and special tools can be quickly installed. The standard equipment of the machine including quick-change magazine and fixed-format parts facilitates an easy and fast tool change.

## Technical Data (Standard)

### Format range



### Carton blank

A-dimension: 150 - 550 (750)\* mm

B-dimension: 275 - 650 mm

\*overall width 2000 mm

### Dimensions carton:

Length: 100 - 700 mm

Width: 70 - 300 mm

Height: 25 - 120 mm

Multi-head tools and special formats on request

Cartons per minute 10-135 depending on design and format of carton

Magazine capacity approx. 1000 blanks per forming head depending on carton thickness

Overall width (max. forming tools)  
1300 mm (1)  
1600 mm (2)  
2000 mm (3)

Power supply 400V/ 3 Phase-N-PE / 50 Hz, Control Voltage 24V/DC

Electrical power/ air consumption at 45 strokes vacuum air	Tab-Lock	5,6 KVA/ 178 l/min - 5,6 KVA / 356 l/min
	Glue	9,8 KVA/ 204 l/min - 11,7 KVA / 408 l/min
	Edge-Wep	5,6 KVA/ 204 l/min - 5,6 KVA / 408 l/min
	Turn-Over-End	5,6 KVA/ 204 l/min - 5,6 KVA / 408 l/min

Weight 650 kg - 850 kg depending on overall width (excluding forming tools)

Change over approx. 5 - 10 min. using forming parts and adjustments

(Technical modifications reserved)