

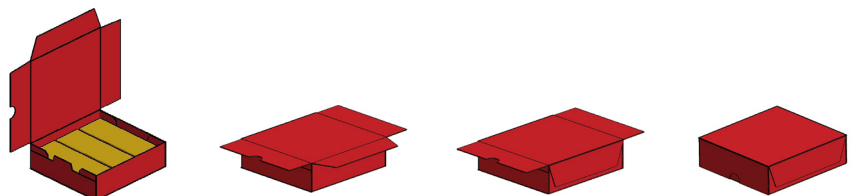
High product competence - Maximum availability -  
Easy format change - Solid construction



## Straightline Carton Closer Type GVE

The carton closer type GVE guides the carton through the machine with the help of lugs. The carton is fed into the pneumatically driven in-feed with pawls. The standing lid is guided downwards and glue is applied onto the front flap. Then the front flap is bent and pressed on. The carton is turned by 90° in a mechanical turning device and glue is applied onto the lateral flaps. After the lateral flaps have been bent and pressed on, the carton is completely closed and driven out of the machine. Driven upper belts with lateral press-on rolls, whose angles change in the course of

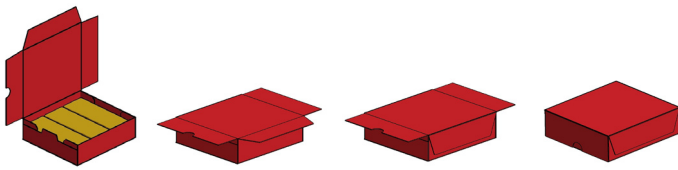
the continuing closing process, facilitate the correct angled closure and, thus, an optimal display of the carton is guaranteed. A spring system for the press-on rolls allows for a secure and precise handling of bulged cartons, e.g. caused by unequally distributed product in the carton, because lugs safely guide the cartons through the machine. The cartons can either be glued by applying glue with the help of a wheel or a glue nozzle, or closed by hot air.



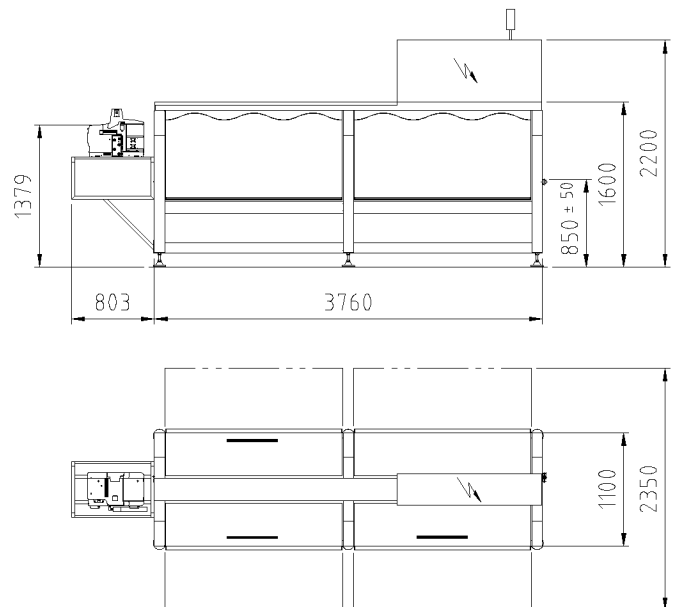
# Straightline Carton Closer Type GVE



## Layout Dimensions



After a successful filling process, the cartons have to be closed. Consequently, the final component of a top load line is the carton closer. Precision, flexibility and reliability are of utmost importance, in order to guarantee the best possible display of the carton and products. The GVE type is ECONO-PAK's most rewarding machine in terms of efficiency and simple and reliable handling. The closer is particularly suited for solid and unsorted products, such as frozen fruit and vegetable or pouch products.



## Technical Data (Standard)

Format range (L x W x H)

min. 125 x 70 x 20 mm  
max. 300 x 250 x 160 mm (glue nozzle/ hot air)  
max. 250 x 250 x 80 mm (glue wheel)

Special formats

on request

Machine capacity per minute

Up to 100 cartons depending on design, format of carton and product

Closing method

Hot glue wheel application  
Hot glue nozzle application  
Hot air nozzle application

Electrical power / air consumption including in- and outfeed conveyor

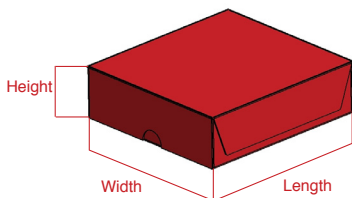
Glue 4,8 KVA, 87 l/ min  
Glue basin 8,3 KVA, 87 l/ min  
Hotair 11,7 KVA, 90 l/ min

Weight

approx. 1100 kg

Format change

approx. 10 min depending on product and construction of carton blank



(Technical modifications reserved)