

Solid construction - High availability -
Low maintenance - Easy format change



ECONO-PAK

THE PACKAGING COMPANY



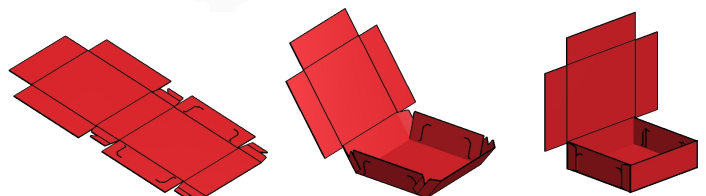
Carton Erector Type HFA

The carton erector type HFA is one of ECONO-PAK's high-speed packaging machines and reaches, even in its compact size, a very high capacity. The shorter distances of the working processes in the machine assure an increased machine capacity with smaller cartons as compared for example to the machine type FA.

A carton feeder with vacuum suckers takes the flat carton blanks individually off the magazine and places them centrally onto the lower tool part. A forming head pushes the blanks through the tool chute and in doing so the cartons are formed. The erected cartons fall onto a conveyor and are transported out of the erector area.

Due to the small size the machine can easily be used as stand-alone machine or integrated in packaging lines.

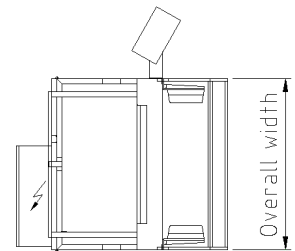
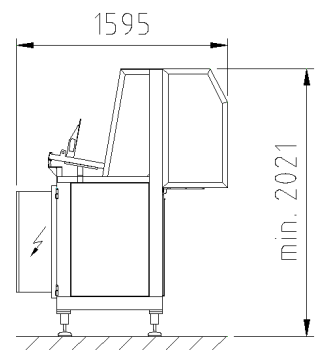
The small and compact construction of the machine, its low-maintenance requirement and high performance convince customers having high expectations for quantity and quality. The high-speed erector type HFA is installed, in particular, in the vegetable- and fish-processing industries and in the sector of convenience food products.



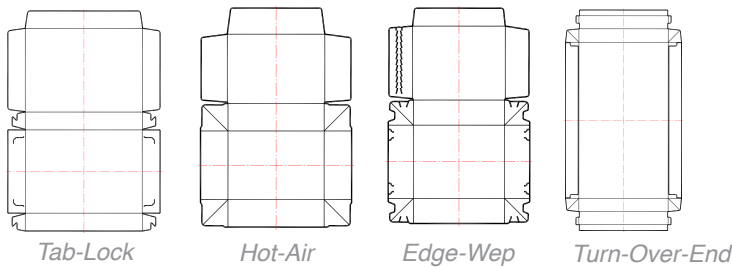
Carton Erector Type HFA



Layout Dimensions



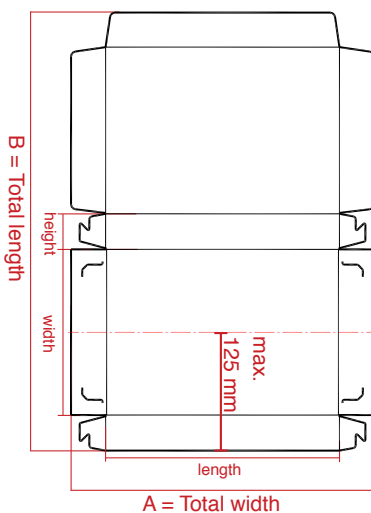
Available Forming Tools



The machine type HFA facilitates numerous options for the tool handling. The tool change enables an easy, very fast as well as economical erecting process of the cartons in tab-lock, hot-melt glue, hot air, edge wep and special design. The standard equipment including quick-change magazine and fixed-format parts constitutes a time-saving and operator-friendly feature of this machine.

Technical Data (Standard)

Format range



Carton blank

A-dimension: 150 - 650 (900)* mm
B-dimension: 275 - 400 mm
*Machine width 2000 mm

Dimensions carton:

Length: 100 - 300 mm
Width: 70 - 200 mm
Height: 25 - 80 mm

Multi-head tools and special formats on request

Cartons per minute 10-250 depending on design and format of carton

Magazine capacity approx. 1000 blanks per forming head depending on carton thickness

Overall width (max. forming tools)
1400 mm (2)
1600 mm (3) / 1800 mm (3)
2000 mm (4)

Power supply 400V/ 3 Phase-N-PE / 50 Hz, Control Voltage 24V/DC

Electrical power/ air consumption at 45 strokes vacuum air	Tab-Lock	5,6 KVA/ 178 l/min	-	5,6 KVA / 712 l/min
	Hot-Air	12,1 KVA/ 178 l/min	-	31,9 KVA / 712 l/min
	Edge-Wep	5,6 KVA/ 204 l/min	-	5,6 KVA / 820 l/min
	Turn-Over-End	5,6 KVA/ 204 l/min	-	5,6 KVA / 820 l/min

Weight 400 kg - 800 kg depending on overall width (excluding forming tools)

Change over approx. 10 - 15 min. using forming parts and adjustments

(Technical modifications reserved)