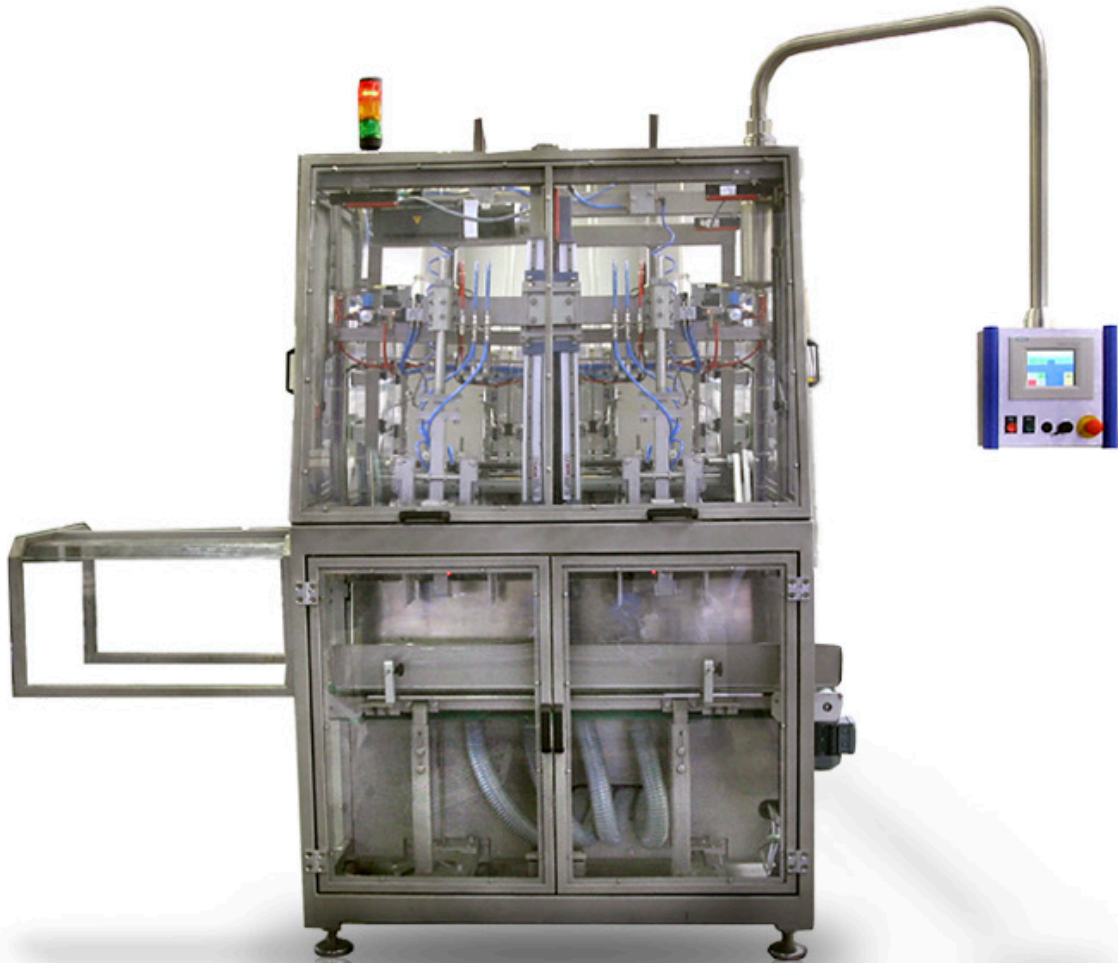


Solid construction - High availability -
Low maintenance



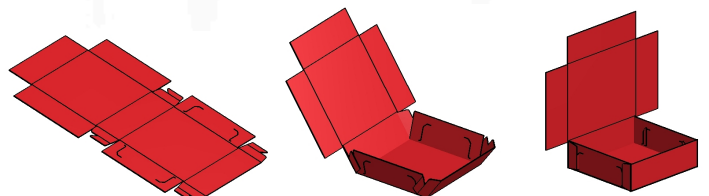
Carton Erector Type HFAI-S

The carton erector type HFAI-S is one of ECONO-PAK's high-speed packaging machines equipped with a servo tool-axis. The carton erector reaches a very high erecting capacity and provides great technical adaptability.

The machine has been designed especially for large format blanks and stands out due to the low loading height of the magazine. A carton feeder with vacuum suckers takes the flat carton blanks individually off the magazine and places them on guide rails. The blanks are pushed in guided manner to the lower tool part. A forming head pushes the blanks through the tool chute and in doing so the cartons are formed. The erected cartons fall onto a conveyor and are transported out of the erector area.

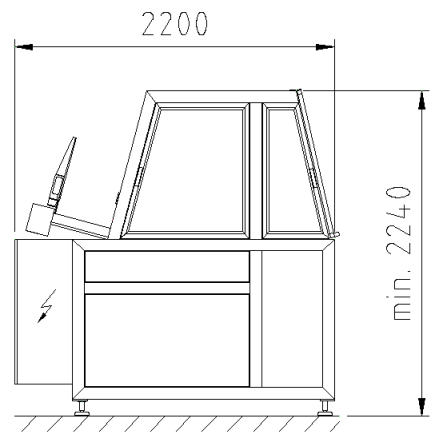
The installed servo tool-axis allows for a fast and quiet erecting of the carton blanks. In addition, a perfect matching of the drives and an individual control of the processes is provided.

Due to the central position of the servo axis in the machine, double-head forming tools can be operated. The machine's comprehensive format range, low-maintenance requirement and high performance convince customers with high expectations for quantity and quality.

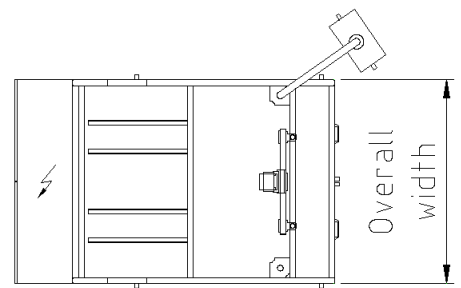
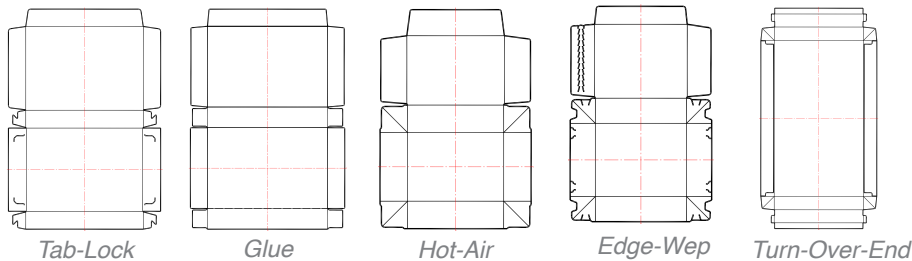


Carton Erector Type HFAI-S

Layout Dimensions

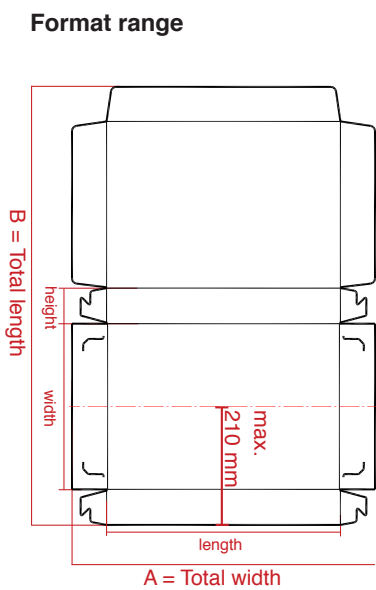


Available Forming Tools



The tools can be changed at all times according to the tools offered by ECONO-PAK. It is possible to easily change between tab-lock, hot-melt glue (nozzle application), turn-over-end, edge-wep and special tools. A simple tool change is carried out by exchanging the forming heads and by adjusting the blank magazine and rails.

Technical Data (Standard)



Carton blank									
A-dimension:	150 - 410 mm								
B-dimension:	275 - 650 mm								
Dimensions carton:									
Length:	100 - 360 mm								
Width:	70 - 250 mm								
Height:	25 - 80 mm								
Multi-head tools and special formats	on request								
Cartons per minute	10-50 depending on design and format of carton								
Magazine capacity	approx. 1000 blanks per forming head depending on carton thickness								
Overall width (max. forming tools)	1400 mm (2) 1800 mm (2) on demand								
Power supply	400V/ 3 Phase-N-PE / 50 Hz, Control Voltage 24V/DC								
Electrical power/ air consumption at 45 strokes vacuum air	<table border="1"> <tr> <td>Tab-Lock</td> <td>7,6 KVA/ 356 l/min</td> </tr> <tr> <td>Glue</td> <td>15,6 KVA/ 408 l/min</td> </tr> <tr> <td>Edge-Wep</td> <td>7,6 KVA/ 408 l/min</td> </tr> <tr> <td>Turn-Over-End</td> <td>7,6 KVA/ 408 l/min</td> </tr> </table>	Tab-Lock	7,6 KVA/ 356 l/min	Glue	15,6 KVA/ 408 l/min	Edge-Wep	7,6 KVA/ 408 l/min	Turn-Over-End	7,6 KVA/ 408 l/min
Tab-Lock	7,6 KVA/ 356 l/min								
Glue	15,6 KVA/ 408 l/min								
Edge-Wep	7,6 KVA/ 408 l/min								
Turn-Over-End	7,6 KVA/ 408 l/min								
Weight	750 - 900 kg depending on overall width (excluding forming tools)								
Change over	approx. 10 - 15 min. using forming parts								

(Technical modifications reserved)