

High product competence - Maximum availability -
Easy format change - Solid construction

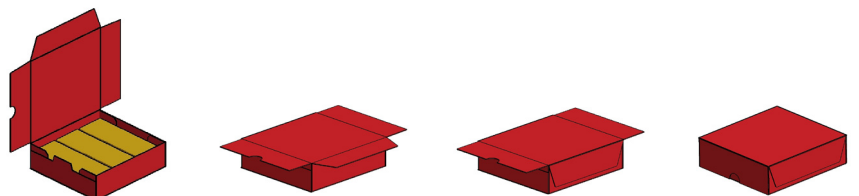


Angle closer Type WVE

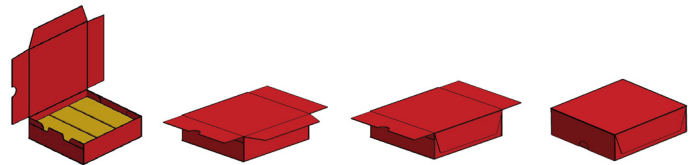
The carton is fed into the continuously running WVE closer with the help of a pneumatically driven pawl in-feed. The upright standing lid is bent down and glue is applied on the front flap. The flap is bent and pressed on. The carton is turned by 90° in the angle section and transferred onto the downstream transport conveyor. Glue is applied on the lateral flaps, then the flaps are bent and pressed on. The carton is now completely closed and fed out of the machine.

The integration of an angle section provides a space-saving layout and the possibility to handle cartons in very long or unproportional formats.

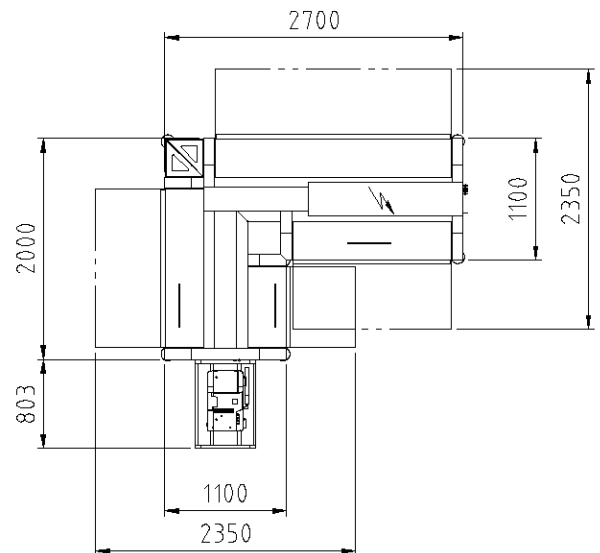
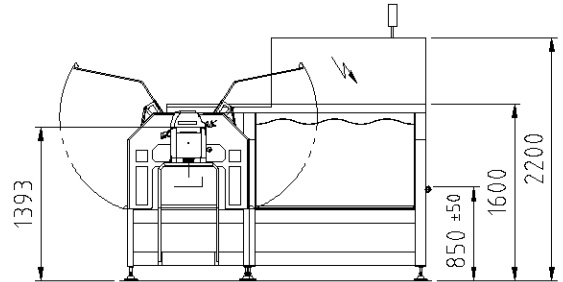
Driven upper belts with lateral press-on rolls, whose angles change in the course of the continuing closing process, facilitate the correct angled closure and, thus, an optimal display of the carton is guaranteed. A spring system for the press-on rolls allows for a secure and precise handling of bulged cartons, e.g. caused by unequally distributed product in the carton, because lugs safely guide the cartons through the machine. The cartons can either be glued by applying glue with the help of a wheel or a glue nozzle, or closed by hot air.



Angle Closer Type WVE



Layout Dimensions



After a successful filling process, the cartons have to be closed. Consequently, the final component of a top load line is the carton closer. Precision, flexibility and reliability are of utmost importance, in order to guarantee the best possible display of the carton and products.

The angle closer convinces the customer due to its small machine dimensions, vast format range and unconventional line layout.

The closer is particularly suited for solid and unsorted products and can also be integrated in difficult line layouts in a confined space

Technical Data (Standard)

Format range (L x W x H)

min. 125 x 70 x 20 mm
max. 300 x 250 x 160 mm (glue nozzle/ hot air)
max. 250 x 250 x 80 mm (glue wheel)

Special formats

on request

Machine capacity per minute

Up to 100 cartons

Closing method

Hot glue wheel application
Hot glue nozzle application
Hot air nozzle application

Electrical power / air consumption including in- and outfeed conveyor

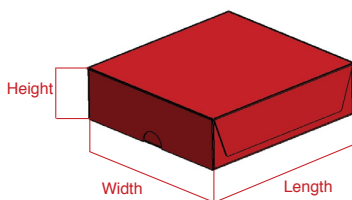
Glue 5,0 KVA, 87 l/ min
Glue Basin 8,5 KVA, 87 l/ min
Hot air 12,1 KVA, 90 l/ min

Weight

ca. 1100 kg

Format change

approx. 5-10 min



(Technical modifications reserved)