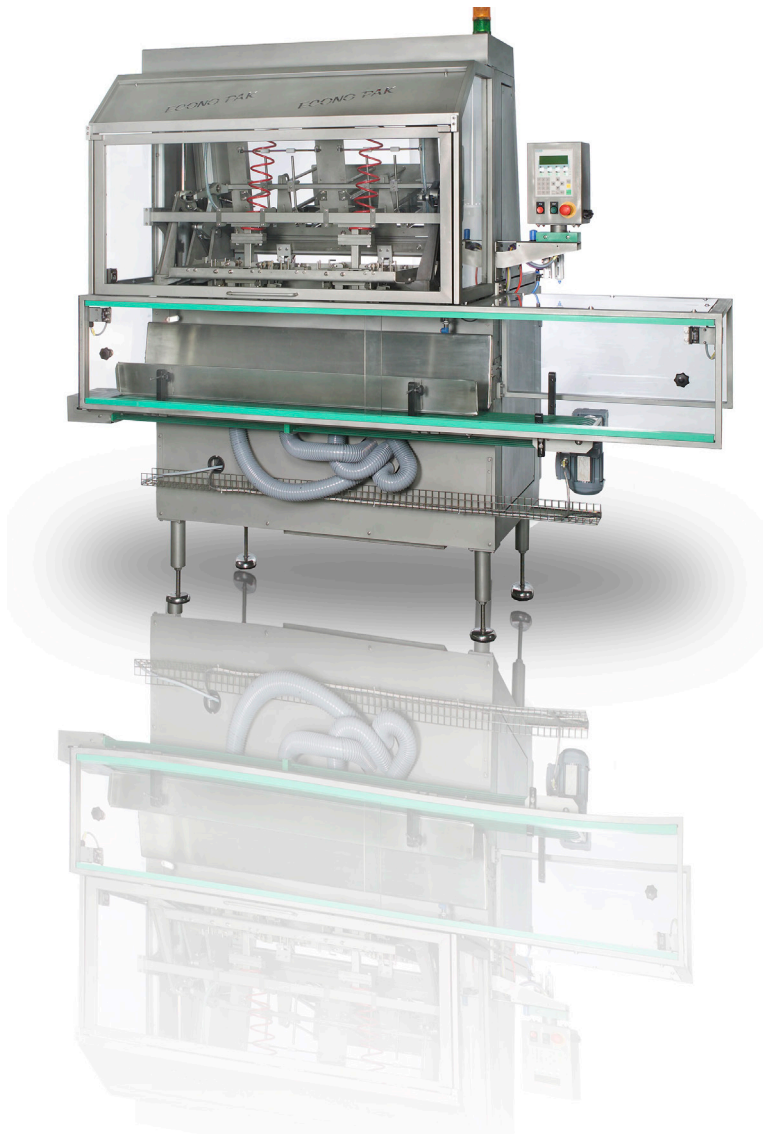
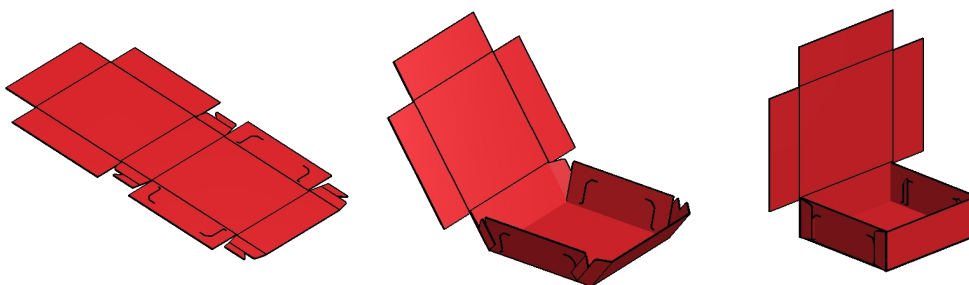


High reliability – low maintenance -
fast format change – compact construction



Carton Erector

Packaging machine for automated forming of flat carton blanks



Carton Erector

The practice-oriented, technical conception of the machine offers a high variety of application; the machine can be used both as stand-alone machine and as part of a packaging line. Our machines are customized and designed according to various requirements, formats and capacities and therefore offer a high degree of flexibility. The Econo-Pak Carton Erector forms flat carton blanks of various designs and carton qualities into boxes with or without lid. The formed carton box falls through the chute on the downstream conveyor system. The forming of the carton blanks is carried out by customized forming tools which are constructed according to the various carton blank designs.

Available in different types and sizes



Direct Carton Erector

Type FA

Tab-lock / hot air / turn-over-end
50 strokes / minute / forming head

Type HFA

Tab-lock / hot air / turn-over-end
60 strokes / minute / forming head

Indirect Carton Erector

Type FAI

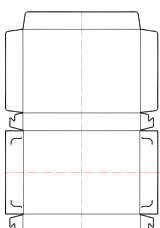
Tab-lock / glue / hot air / turn-over-end
45 strokes / minute / forming head

Type HFAI-S (Servotechnik)

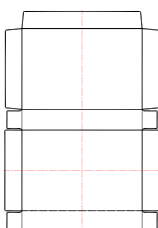
Tab-lock / glue / hot air / turn-over-end
60 strokes / minute / forming head

The standard equipment with quick-change magazines and fixed-format parts allows for an easy and fast tool change and is one of the main characteristics of this machine. Numerous adaptability options of the tools facilitate the handling of almost all carton designs and enable an easy, fast and economical erecting process of carton boxes.

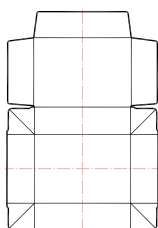
The following tools are available for different carton blank designs:



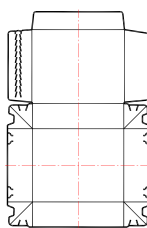
Tab-lock



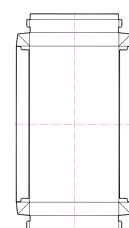
Glue



Hot air



Edge-wep



Turn-over-end

Additional carton blank designs are possible.